

## Asher B. Durand. Kindred Spirits. 1849.

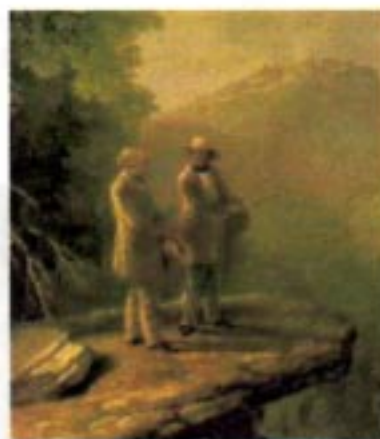
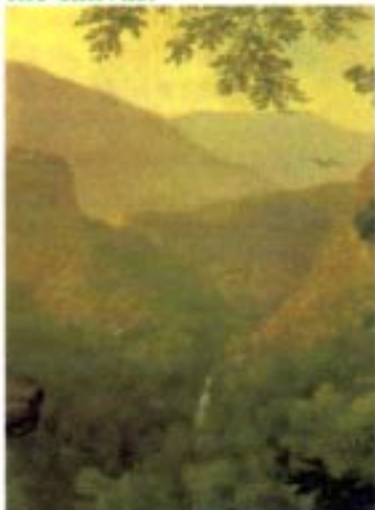
The painting was commissioned by New York art collector Jonathan Sturges

What I like about the painting is it made me think of look out points that I know of, and I like how much detail was put into the painting from the trees to the river running underneath the two people standing on the rock.



Durand used atmospheric perspective to make the allusion that the mountains were far away and the two people were looking into the distance.

The Landscape is not a literal record of a particular site. It is an idealized memory of Thomas Cole's discovery of the region more than twenty years prior to painting the canvas.



Depicts the recently deceased painter Thomas Cole and his friend the poet William Cullen Bryant talking and looking into the distance.

The painting was sold at an auction in May 2005 to Alice Walton for \$35 million.