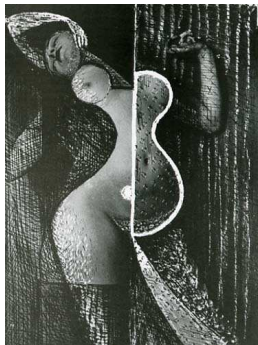


Theme #9
Drawing Intervention

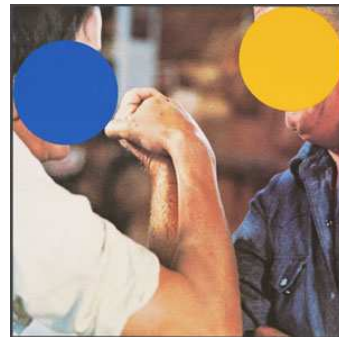
According to a standard dictionary, to intervene is “to come in between either by way of hindrance or modification.” In a “drawing intervention” the artist can hinder a found source by adding in their own drawn ideas, or modify their own drawings by inserting found imagery and materials. This kind of working method can be very fun and playful while also being conceptual and conveying complex messages. The artist can literally intervene in a message from popular culture and argue against the ideas put forth, or embrace those ideas by expanding and embellishing them. Your challenge is to find interesting materials to work with and to manipulate your media so that it expresses your ideas effectively.

Project	Instructions	Supplies
Additive intervention		
	Find images in magazines, posters, newspapers, online, from postcards or photocopied from books	Student’s choice
	Add in drawn interventions	
	Focus on the concept of your drawing and think about meaning and message	
Subtractive intervention		
	Find images in magazines, posters, newspapers, online, from postcards or photocopied from books	Student’s choice
	Integrate those found images into your own drawing (try a 50/50 integration)	
	Consider collage, projection and assorted transfer techniques to add interest and meaning to the work	

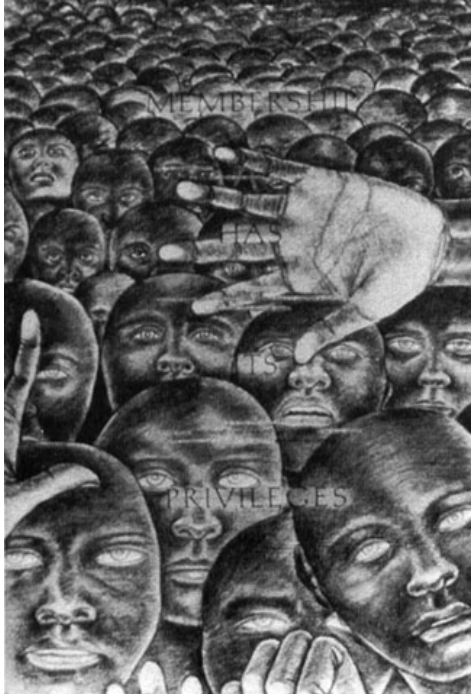
Additive Interventions



Brassai. Odalisque. 1934/35.



John Baldessari. Two Opponents (Blue & Yellow). 2004.

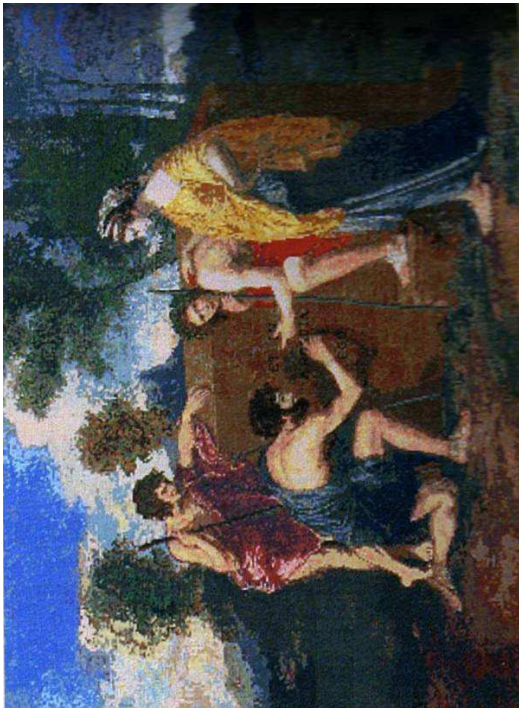


Adrien Piper. Membership Has Its Privileges (Vanilla Nightmare series). Date unknown.

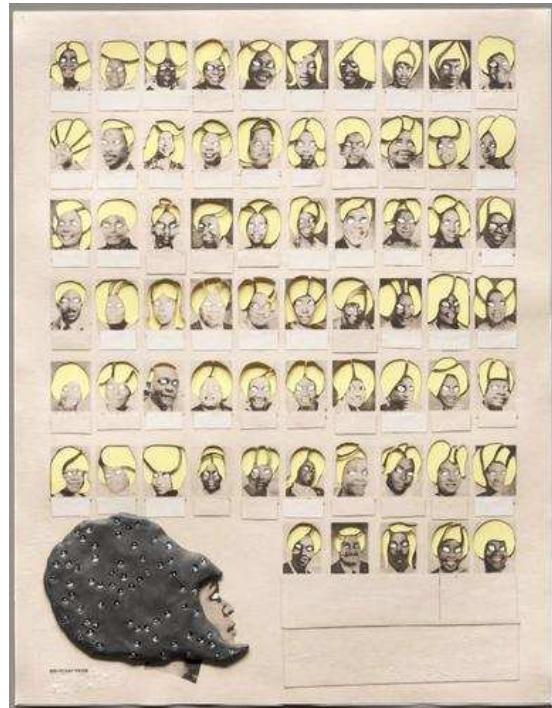


Yoshitomo Nara. U-ki-yo-e. 1999.

Subtractive Interventions



Elaine Reichek. ET IN ARCADIA EGO . 2006.



Ellen Gallagher. Bouffant Pride. 2003.